

[< Back to search results](#)[Print](#)

PROFILER EDITOR - NEW FEATURE IN THE 11.6 PROGRESS DEVELOPER STUDIO FOR OPENEDGE

INFORMATION

Article Number 000064682

Environment Product: OpenEdge
Version: 11.6
OS: All supported platforms
Others: Progress Developer Studio for OpenEdge, Profiler Editor

Question/Problem Description

Steps to Reproduce

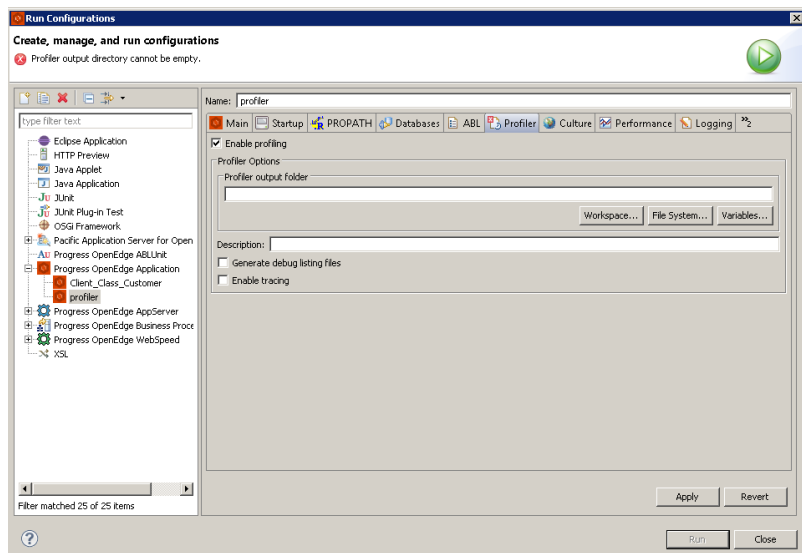
Clarifying Information

Error Message

Defect/Enhancement Number

Cause

Resolution From version 11.6 onwards Progress Developer Studio provides an built-in Profiler Editor. The Profiler tab can be used to Run Configuration to profile a session. The details of the profiled session are displayed in the editor.



For detailed information refer to the documentation referenced below.

Workaround

Notes References to Other Documentation:

Progress Developer Studio for OpenEdge, chapter: Profiler Editor

Attachment

Last Modified Date 8/31/2016 1:26 PM

Disclaimer The origins of the information on this site may be internal or external to Progress Software Corporation ("Progress"). Progress Software Corporation makes all reasonable efforts to verify this information. However, the information provided is for your information only. Progress Software Corporation makes no explicit or implied claims to the validity of this information.

Any sample code provided on this site is not supported under any Progress support program or service. The sample code is provided on an "AS IS" basis. Progress makes no warranties, express or implied, and disclaims all implied warranties including, without limitation, the implied warranties of merchantability or of fitness for a particular purpose. The entire risk arising out of the use or performance of the sample code is borne by the user. In no event shall Progress, its employees or anyone else involved in the creation, production, or delivery of the code be liable for any damages whatsoever (including, without limitation, damages for loss of business profits, business interruption, loss of business information, or other pecuniary loss) arising out of the use of or inability to use the sample code, even if Progress has been advised of the possibility of such damages.

Disclaimer

The origins of the information on this site may be internal or external to Progress Software Corporation ("Progress"). Progress Software Corporation makes all reasonable efforts to verify this information. However, the information provided is for your information only. Progress Software Corporation makes no explicit or implied claims to the validity of this information.

Any sample code provided on this site is not supported under any Progress support program or service. The sample code is provided on an "AS

basis. Progress makes no warranties, express or implied, and disclaims all implied warranties including, without limitation, the implied warranties merchantability or of fitness for a particular purpose. The entire risk arising out of the use or performance of the sample code is borne by the user. In no event shall Progress, its employees, or anyone else involved in the creation, production, or delivery of the code be liable for any damages whatsoever (including, without limitation, damages for loss of business profits, business interruption, loss of business information, or other pecuniary loss) arising out of the use of or inability to use the sample code, even if Progress has been advised of the possibility of such damages.

Feedback

Was this article helpful?



Copyright © 2017 Progress Software Corporation and/or its subsidiaries or affiliates.

All Rights Reserved.

Progress, Telerik, and certain product names used herein are trademarks or registered trademarks of Progress Software Corporation and/or one of its subsidiaries or affiliates in the U.S. and/or other countries. See [Trademarks](#) for appropriate markings.



[Terms of Use](#)

[Privacy Policy](#)

[Trademarks](#)

[License Agreements](#)

[Careers](#)

[Offices](#)