

User Interface - Bug #4841

com-handle to handle automatic input parameter conversion

08/05/2020 10:18 AM - Vladimir Tsichevski

Status:	Review	Start date:	08/05/2020
Priority:	Normal	Due date:	
Assignee:	Vladimir Tsichevski	% Done:	0%
Category:		Estimated time:	0.00 hour
Target version:		case_num:	
billable:	No		
vendor_id:	GCD		
Description			

History

#1 - 08/05/2020 10:26 AM - Vladimir Tsichevski

- File incompatible-data-types.png added

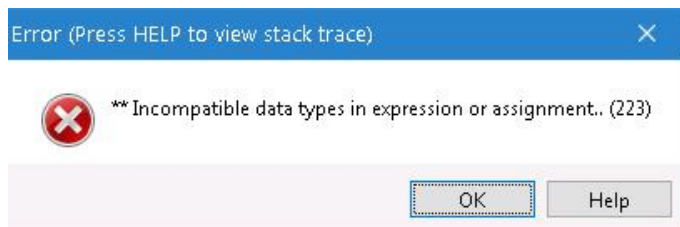
The problem:

In OE, it is Ok to pass a com-handle value as a parameter to a procedure, which declares the corresponding parameter type as handle, not as com-handle.

Example:

```
DEFINE VARIABLE CtrlFrame AS WIDGET-HANDLE NO-UNDO.  
DEFINE VARIABLE chCtrlFrame AS COMPONENT-HANDLE NO-UNDO.  
def frame default-frame.  
  
CREATE CONTROL-FRAME CtrlFrame ASSIGN  
    FRAME = FRAME DEFAULT-FRAME:HANDLE.  
  
chCtrlFrame = CtrlFrame:COM-HANDLE.  
  
PROCEDURE proc0.  
    DEFINE INPUT PARAM h AS HANDLE.  
end.  
  
RUN proc0(INPUT chCtrlFrame).
```

This example runs Ok in OE, but in FWD it causes:



FWD shall be patched to support this type of parameter type conversion.

#2 - 08/05/2020 10:41 AM - Vladimir Tsichevski

The proposed patch (in ControlFlowOps.InternalEntryCalled.valid(...) and handle.assign(BaseDataType)):

```
=== modified file 'src/com/goldencode/p2j/util/ControlFlowOps.java'
@@ -8499,6 +8499,15 @@
        continue;
    }

+    // provide compatibility between comhandles and handles
+    if (comhandle.class.isAssignableFrom(argType) &&
+        handle.class.equals(expectedType))
+    {
+        newPars[i] = new handle((comhandle) param[i]);
+        // TODO: check the OUTPUT mode case
+        continue;
+    }
+
+    if (!expectedType.isAssignableFrom(argType))
+    {
+        try

=== modified file 'src/com/goldencode/p2j/util/handle.java'
@@ -3801,6 +3801,10 @@
    {
        assign(fromResourceId((new integer(value)).longValue()));
    }
+    else if (value instanceof comhandle)
+    {
+        assign(((comhandle) value).value);
+    }
    else
    {
        String err = "Incompatible data types in expression or assignment.";
    }
}
```

#4 - 08/05/2020 02:02 PM - Vladimir Tsichevski

- Status changed from New to WIP

Fixed in 3821c rev. 11439, 4011b rev. 11620.

#5 - 08/05/2020 02:02 PM - Vladimir Tsichevski

- *Status changed from WIP to Review*

Files

incompatible-data-types.png	4.43 KB	08/05/2020	Vladimir Tsichevski
-----------------------------	---------	------------	---------------------